

Lois Ludwig



THE TRAIL-LETTER

A BI-MONTHLY PUBLICATION OF THE MONTOUR TRAIL COUNCIL
VOLUME #2 *** SPRING 1991 ***** ISSUE #2**

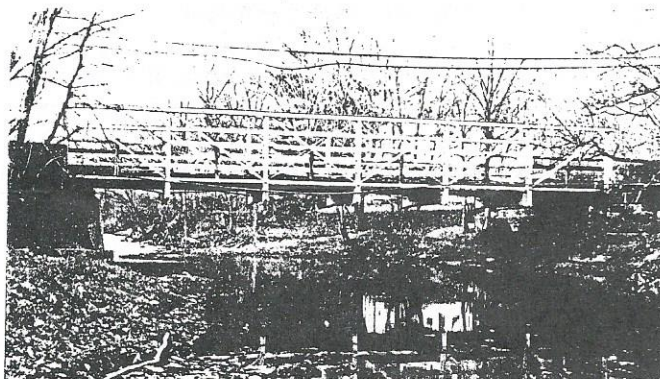
\$150,000 RIRA GRANT APPROVED FUND RAISING ROLLS ON

Allegheny County annually applies to the Pennsylvania Department of Community Affairs (DCA) for grants under the Recreational Improvement and Rehabilitation Act (RIRA). This year the county, as part of their application to DCA requested funding for the the Montour Trail Project. In order obtain the money, there had to be matching funds from a private source. The grant earlier awarded the Montour Trail Council from the Vira Heinz Foundation will be the matching source.

The county was awarded nearly \$340,000 for five projects including the Montour Trail. Of that amount, \$150,000 was designated toward Montour Trail right-of-way acquisition. Allegheny County and the Montour Trail Council will develop the trail in a public-private partnership.

REUSE OF HISTORIC BRIDGES CONSIDERED

by Dave Wright



Allegheny County is offering historic Pine Creek Bridge #7 for reuse. It serves Fall Run Road near Rt 8 in Shaler Township (photo courtesy of Bill Metzger)

Our Right-of-way Committee is considering reusing historic bridges to replace missing spans on the Montour Trail. It is not a new idea. The Baltimore and Annapolis Trail is moving an old truss from Missouri to span Marely Creek.

By Tom Dougherty

Montour Trail Council fund raising efforts continue to build funds for the acquisition and construction of the Trail. The most recent grants include \$25,000 from the USX Foundation and \$300 from St. Clair Memorial Hospital. The Council wishes to express its appreciation to these organizations for their grants. Fund raising efforts continue with two outstanding proposals and four proposals in the works that will be presented with the next week or two.

Anyone who has any ideas on fund raising, please call Tom Dougherty at 571-0613.

At this time, a total of \$450,000 in funds (including the RIRA and USX grants) are available for aquisition purposes. However, these funds are not available for MTC operational and administrative costs. We need all council members to renew their membership in the council to recover these expenses.

One good possibility is Pine Creek Bridge #7, on Fall Run Road in Shaler Township. Allegheny County must replace this 70 foot pony truss to widen Pine Creek and reduce flooding. The Pennsylvania Historic and Museum Commission determined that the 1896 truss qualifies for the National Register of Historic Places. The bridge will be replaced using Pennsylvania Bridge Bill funding. Because of its historic nature, state funds may be available for saving this bridge and donating it to a worthy organization for reuse.

We must determine whether the bridge will fit on a site where a span is needed and how the cost of moving and rehabilitating the bridge compares with the cost of a new bridge. The one-lane bridge is currently posted for a three ton weight limit, which will be fine for trail use. Peter Kohnke has offered part of his farm in Chartiers Township to store and rehabilitate the bridge.

MTC SAYS THANKS

The Montour Trail Council sponsored a booth at the Western Pennsylvania Travel and Outdoor Expo held at the David L. Lawrence Convention Center from Wednesday, February 27th through March 3rd. During the show, we collected hundreds of signatures on our petition and made many new friends. We want to thank the following hard-working people who manned the booth and helped spread the word about the Montour Trail:

**Dino Angelici
Tom Dougherty
Marshall Fausold
Tim Killmeyer
Lois Ludwig
Bill Metzger
Andy Poole
Larry Ridenour
Dan & Fran Robb**

**Stan Sattlinger
Frank Suatoni
Bill Schallus
George Schimdt
Dennis Sims
Claudia Slevin
Jack Swisher
Dave Wright**

We also wish to thank **St. Clair Memorial Hospital and the Dino R. Angelici, DMD, Family Denistry** for co-sponsoring our display at the Greater Pittsburgh International Airport. Their assistance will enable our display to remain through the summer months.

RECENT ADDITIONS TO OUR COALITION

The Montour Trail Council welcomes the following groups to our coalition of endorsing organizations:

**Pittsburgh Section, American Society of Civil Engineers
Bridgeville Parks and Recreation Board
Group Against Smog and Pollution (GASP)
Men's Garden Club of Western Pennsylvania
Montour Valley Horsemen's Association
Wissahickon Nature Club**

Resolutions in support of the Trail have been adopted by a growing number of municipalities including the following:

**In Allegheny County: Bethel Park, Jefferson; Findlay, Moon and Robinson Townships
In Washington County: Cecil and Peters Townships**

CALLING ALL CYCLISTS

by Tim Killmeyer

NOW YOU DO NOT HAVE TO WAIT TO SEE WHERE THIS TRAIL WILL BE!

Experience it first hand on Saturday, June 8, when the Western Pennsylvania Wheelmen will be leading a ride that very closely follows the Trail. The ride will start at 8:00 AM near the intersection of Beaver Grade Road and Montour Run across from the Brothers Grimm Lounge. The ride will follow the trail all the way to Clairton Park, where it will then follow the Monongahela River through Glassport, McKeesport, Homestead, South Side and McKees Rocks. Then it will cut through Kennedy and Robinson Townships back to the start. Total mileage is approximately 75 miles. For those riders who would like to do lesser miles, it is suggested that they team up with a friend and organize a shuttle with a vehicle in place where they want to finish the ride. Distances from the starting point are:

| | |
|---------------------------------------|-----------------|
| Cecil Park | 21 miles |
| Arrowhead Trail in Peters Twp. | 30 miles |
| Clairton Park | 46 miles |
| Kennywood Park | 53 miles |
| Homestead | 57 miles |
| South Side | 62 miles |
| Station Square | 64 miles |

Riders stopping in Cecil will miss a large hill used to get around the National Tunnel. Those stopping in South Park Twp. will miss the biggest hill of the ride: Snowden Road to Gill Hall Road. Since most of the ride parallels the railroad or river, it is fairly level or slightly rolling. Maps and directions will be provided.

The ride is open to anyone, and registration will be done at the starting point. An official Montour Trail T-shirt and a pair of bumper stickers will be available for \$9.00 to anyone who calls **Tim Killmeyer (787-1472)** with their shirt size before June 3. Call **Tim or Jim Bukovac (859-3258)** if you need more information.

MEMBERSHIP MEETING MAY 20th

The next meeting of the MTC will be held on Monday, May 20, 1991 at 7:30 PM at the American Legion Scout Room in Cecil Township along PA 50. The program will feature Tim Sposato former employee of the Montour Railroad who will show railroad scenes along the Montour right-of-way. A question and answer session will follow. See map on next page for directions to the Cecil Township American Legion.

NEAR-TERM TRAIL PLANS

by Stan Sattlinger

At a recent goal-setting meeting, the MTC Board of Directors placed high priorities on the following efforts:

RIGHT-OF-WAY NEGOTIATIONS: We are in the process of seeking the most favorable arrangements for acquiring or accessing portions of the right-of-way presently owned by the P&LE Railroad, West Penn Power, and other firms and agencies. Negotiations with the P&LE are scheduled to take place during the month of May with hopes that both parties can reach agreement by the end of the month.

FUND DEVELOPMENT: Our success in raising funds for acquisition does not give us reason to pause. The far more costly phase of trail development awaits us.

INTERACTION WITH LOCAL GOVERNMENTS: We will be working with the municipalities and counties through our Trail Representatives to resolve PUC concerns over responsibilities for the railroad/highway bridges and to establish other Trail details.

DESIGN STANDARDS AND CONSTRUCTION PLANS: We will be creating trail-wide design standards and specific design details for each trail section.

PREPARATIONS FOR POSTING AND STAKING OUT PROPERTY: We will be obtaining signs for the interim posting of hazardous conditions and making preparations to mark of property boundaries. These activities will be in preparation for cleanup operations that will follow.

PUBLIC RELATIONS CAMPAIGNS: We will continue to inform the public about the benefits of the Trail and to obtain favorable media coverage of our project.

If you are interested in volunteering for any of these efforts, please contact Jerry Agin, our membership Chairman and Volunteer Coordinator at 343-1425 (home) or 642-6900 (work).

THE MONTOUR TRAIL COUNCIL
P.O. BOX 11866
PITTSBURGH, PA 15228-0866
PHONE : (412) - 831 - 2030

| | |
|-----------------|---------------------------|
| STAN SATTLINGER | PRESIDENT |
| DINO ANGELICI | VICE-PRESIDENT |
| PETER KOHNKE | SECRETARY |
| JACK SWISHER | TREASURER |
| DENNIS SIMS | NEWS-LETTER EDITOR |

TRAIL REPRESENTATIVES

by Jack Swisher

The Montour Trail Council is currently organizing a group of Local Trail Representatives (LTR's). The LTR's work within the communities the Trail passes through to develop support for the Trail and respond to questions and concerns from community residents. They will also work with local government officials on matters affecting Trail development.

We want to thank the following Trail Reps who have volunteered to help make the trail a reality in their community:

Dennis Pfleffer
Steve Schotting

Frank Keppel

Amy and
Joel Hamilton
Fred Pollastrini
Jack McGinnis
Christine Boch
Diana Blocher
David Carlson

Moon Township
Robinson Twp. (Allegheny County)
Robinson Twp. (Allegheny County)

Findlay Township
North Fayette Township
Peters Township
Bethel Park
Bethel Park
South Park Township

We can use additional volunteers in the above communities to help the Trail Reps. We also need volunteers to set up the Trail Rep organizations in the following communities:

Robinson Township (Washington County)
Mount Pleasant Township
Chartiers Township
Cecil Township
Jefferson Borough

The LTR's are organized into three broad geographic areas. The efforts of the Trail Reps are coordinated by a Trail Area Coordinator (TAC) who is an MTC board member. Tim Killmeyer is the TAC for Moon, Robinson, Findlay, and North Fayette Townships. Jack Swisher coordinates the Washington County Communities of Robinson, Mount Pleasant, Chartiers, Cecil, and Peters Townships. Marshall Fausold is the coordinator for Bethel Park, South Park Township and Jefferson Borough. If you are interested in helping out, please give one of the coordinators a call at the following numbers:

| | |
|------------------|------------|
| Marshall Fausold | 531 - 8628 |
| Jack Swisher | 221 - 7708 |
| Tim Killmeyer | 787 - 1472 |

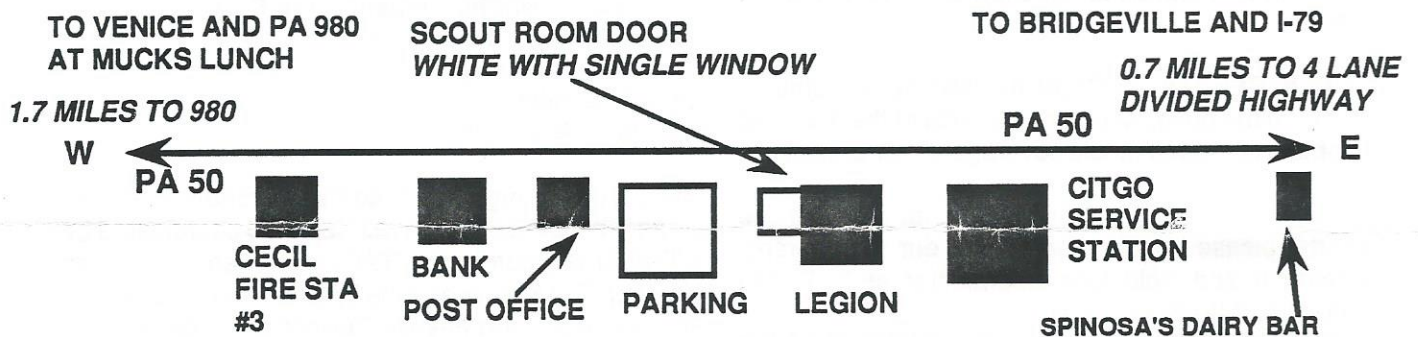
MTC MEMBERSHIP MEETING

WHEN: Monday, May 20, 1991 at 7:30 pm.

WHERE: American Legion - Scout Room, PA RT 50, Cecil PA

PROGRAM:

Railroad Scenes on The Montour: Tim Sposato-master mechanic on the Ohio Central Railroad and former employee of the Montour.



MAP IS NOT TO SCALE

CAUTION: ROAD CONSTRUCTION AT THE PA 50 AND I-79 INTERCHANGE MAY CAUSE DELAYS. SO ALLOW EXTRA TIME