



The Official Publication of the Montour Trail Council

# MONTOUR TRAIL-LETTER

Volume 25 Issue 3

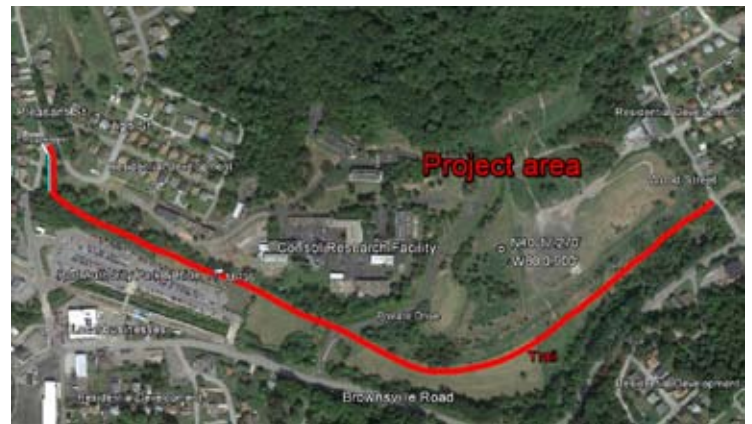
May-June 2014

## Trail Easement through the Consol Research Facility in South Park Township by Mark Imgrund

We are pleased to report that an important gap in the Montour Trail can soon be eliminated due to the generosity of Consol Energy, Inc. A trail easement agreement between Consol and the MTC signed on April 4 will allow the construction of a 0.7-mile trail segment through Consol's South Park Research Facility, eliminating most of the current trail detour on adjacent Brownsville Rd. This new section will largely follow the old railroad alignment through Consol's property and connect the trail section (currently under construction) from the Library Viaduct to Pleasant Street with Wood Street. A grant application to the PA Department of Conservation and Natural Resources has been submitted in an effort to secure funding for building this section of trail.

We are currently surveying the corridor to finalize the alignment, which will roughly follow the sketch shown right.. Pending successful procurement of construction funding, we hope to build this section next year.

We are most appreciative of Consol's cooperation in making this possible, and wish to especially thank three individuals from Consol who were instrumental in making this a reality: Mr. Tommy Johnson, Vice President for Government and Public Relations; Steve Winberg, Vice President Research and Development; and Dave Bojtos, Manager – Dispositions. We couldn't have done it without their invaluable assistance. *Image created by Dave Oyler.*



### Inside this issue:

Consol Easement Library Viaduct Groundbreak	1
Prez Sez	2
Twilight Trail Walk Milepost 0 Closing	3
Burgh 10K 5K 2 Mile Walk Westland Branch Update	4
Bike and Ped News Photo Contest Winner	5
Montour History- B & T	6
New Members /Memorials VB#2 Detour Info	7
Trail Closure Calendar	8

Visit the Montour Trail Web Site at:  
[www.montourtrail.org](http://www.montourtrail.org)

To Converse, join the Yahoo Group at:  
<http://groups.yahoo.com/neo/groups/Montour-Trail/info> or

<https://www.facebook.com/groups/43518292159>

## Ceremonial Groundbreaking

Borrowing the words of Emcee Dave Borrebach, a ceremonial groundbreaking was held in the parking lot of Rite Aid in the shadows of the Library Viaduct for the Library Viaduct Construction and Trail from the viaduct to Pleasant Street. Thank you to Rite Aid for allowing the use of their lot for our event on Sunday, May 18.. *Left to right: Ody Mackin, founder, Mackin Engineering; Kinga Blum, partner, Mingo Creek Construction; Walt Sackinsky, member, South Park*



*Dennis Pfeiffer, President, MTC. Photo Ned Williams*

*Township Board of Supervisors; Dave Buchewicz, Chairman; South Park Township Board of Supervisors; Ed Snee, member, South Park Township Board of Supervisor; John Palmiere, Member, Allegheny County Council; Matt Smith, Senator, State of Pennsylvania; Tom Prezel, Library Viaduct Project Manager, and VP of MTC; Tim Murphy, Member of Congress; Rick Saccone, Representative, State of Pennsylvania; Peter Kohnke, Former President, MTC; Abby Thornbury, Engineer, Thornbury Construction; Roy Weil, Trail Advocate, Shaw-Weil Associates; Sue Means, Member, Allegheny County Council; Bill Armstrong, Project Engineering Manager, WEC Engineers;*



**MONTOUR TRAIL COUNCIL  
BOARD OF DIRECTORS**

Dennis Pfeiffer	President
Tom Prezel	Vice President
Deb Esia	Treasurer
Phyllis McChesney	Secretary
<i>Jan Carey</i>	<i>2012-2014</i>
<i>Mark Imgrund</i>	<i>2012-2014</i>
<i>Dennis Pfeiffer</i>	<i>2012-2014</i>
<i>Tim Thomassy</i>	<i>2012-2014</i>
<i>Deb Esia</i>	<i>2013-2015</i>
<i>Chuck Hughey</i>	<i>2013-2015</i>
<i>Denis Kane</i>	<i>2013-2015</i>
<i>Tim Killmeyer</i>	<i>2013-2015</i>
<i>Gil McGurl</i>	<i>2013-2015</i>
<i>Don Thobaben</i>	<i>2013-2015</i>
<i>Dino Angelici</i>	<i>2014-2016</i>
<i>Bill Capp</i>	<i>2014-2016</i>
<i>Eric Chipps</i>	<i>2014-2016</i>
<i>Phyllis McChesney</i>	<i>2014-2016</i>
<i>Dave Oyler</i>	<i>2014-2016</i>
<i>Tom Prezel</i>	<i>2014-2016</i>

**THE MONTOUR TRAIL-LETTER**

is published bi-monthly January through December. All correspondence should be addressed to:

**MONTOUR TRAIL-LETTER**

**Suite 3 2nd Floor  
304 Hickman Street  
Bridgeville, PA 15017**

**Or E-mail to:**  
newsletter@montourtrail.org

All other trail correspondence should be addressed:

**MONTOUR TRAIL COUNCIL**

**Suite #3 2nd Floor  
304 Hickman Street  
Bridgeville, PA 15017**

MONTOUR TRAIL COUNCIL  
PHONE NUMBER **412-257-3011**

**Administrative Manager**  
Phyllis McChesney  
MTCoffice@montourtrail.org

**NEWSLETTER EDITORIAL TEAM**

Dennis Sims, managing editor

Troy Bogdan	Tim Killmeyer
Mark Imgrund	Dennis Pfeiffer

***Prez says:***

I extend greetings to the members, friends and supporters of the Montour Trail. We are very appreciative of your support of the Montour Trail. Please email or call us directly with your questions or suggestions on improving the trail at MTCoffice@montourtrail.org or 412-257-3011.

Well this has been a very busy early spring in the Montour Trail Council offices in Bridgeville.

Our Finance committee headed by Denis Kane, the Engineering Construction committee co-chaired by Gil McGurl and Tom Prezel and your MTC board, has all worked in various meetings to keep the Library Viaduct project moving forward.

The discussions in these meeting centered on the April 24 low bid for the rehab of the Library Viaduct, which came in about \$340,000 higher than our estimates. The Finance committee met on April 28 and after a lot of discussion determined there was sufficient MTC funds on hand to proceed. Thus a recommendation was made to the board for an additional allocation of \$340,000 from general funds for the project.

Since the board had just met on April 21, an emergency email board vote was conducted on May 1. The additional funds, I am happy to report, were approved by the board. The majority of the funds for this project (\$1,500,000) is from federal enhancement grant awards and thus administered by PennDOT. A letter was sent to PennDOT's District 11-0 office on May 1 to document that indeed there was enough funds for the project for PennDOT to proceed. We are hoping PennDOT will give the contractor Thornbury Inc. the notice to proceed sometime in July.

In October, the board had already approved almost \$500,000 from general funds just to allocate enough money for the former lower estimate. At that time, we decided to form a Capital Campaign committee to research other possible funding resources. The committee headed by Bruce Barron has worked very hard over the last five months and has made several presentations to local foundations. We are hoping that some assistance may be provided from the foundation community for the Library Viaduct project.

The MTC has been very thrifty with its funds over the years. We were able to move the Library Viaduct project forward by keeping most of the funds in reserve that were derived from leasing the Westland branch for a rail/trail project. However, we will be running a little lean over the next couple of years. With over ten million dollars in trail improvements to maintain, we are hoping our reserves will cover any unforeseen maintenance items in the near future.

Happy Trails

Dennis Pfeiffer, President

## Friends' Meetings and Work Parties

### MTC Board Meeting:

Every third Monday of the month - 6:00 p.m. at 304 Hickman St., Suite 3, Bridgeville, PA. Turn right off of the Bridgeville exit of I-79. Turn left at the next light, go straight at next light and make left turn onto Hickman St. just after the Post Office. Call Dennis at 412-262-3748 for more information or to get on the agenda.

### Airport Area Friends: (MP 0 to MP 12.6 and the 6.3 mile

**Airport Connector)** The Airport Area Friends of the Trail meet every second Wednesday of the month at 7:00 p.m. at the Forest Grove Fire Hall, 2044 Ewings Mill Road, Robinson Township, PA 15108. New volunteers are always welcomed. Contact Phyllis McChesney at 412-264-6303 for more information. Numerous Saturday "work parties" are held during the season. Please call 412-262-3748 to lend a hand at the work parties.

### Fort Cherry Friends: (MP 12.6 to MP 20.7)

Friends of the Trail meeting: Second Wednesday of the month at 7:00 p.m. at the McDonald Trail Station, 160 S. McDonald Street, McDonald, PA 15057 (adjacent to the Panhandle Trail). Work and cleanup parties will be scheduled as needed. For more information contact Tim Thomassy, 724-926-4617 or Chuck Hughey, 724-926-9436.

### Cecil Friends: (MP 20.7 to MP 28.5)

Friends of the Trail meeting, every fourth Monday of the month at 7:00 p.m. From May-August, meetings are held at the Kurnick Access area along the trail off Cecil Henderson Road; other months (with the exception of November and December) meet at the MTC Offices. Work and cleanup parties are scheduled as needed. Call 412-496-4308 for more information, or email densimwx@comcast.net

### Peters Township Friends: (MP 28.5 to 30.4, Library Jct to near MP 35 and part of the Bethel Branch)

Friends of the Trail Meeting, first non-holiday Monday of the month at Peters Township Community Recreation Center at 7:00 p.m. For more information on work and cleanup parties, please contact Jim Robbins at 724-941-6132, or for monthly meetings, Mark Imgrund at 724-941-6351 or by e-mail at markimgrund@gmail.com

### Bethel Park Friends: (The 2.75 mile Bethel Branch and a short piece of main line trail around MP 35)

Friends of the Trail meeting, every first Tuesday of the month at 7:30 p.m. in the Bethel Park Municipal Building Council Chambers. Anyone interested in the Bethel Park Trail segment is encouraged to come. Work and cleanup party, every second and fourth Saturday of the month - 8:30 a.m. Call Bob O'Connell at 412-833-6259 for location and information.

### South Hills Friends: (MP 35.4 to 46.3)

Meeting second Tuesday of the month at 6:30 p.m. at South Park Township Community Room, located behind the Township Building at 2675 Brownsville Road, South Park, 15129. Work and cleanup parties scheduled and advertised as needed. For more information, contact David Oyler at 412-831-9288, davidoyler@verizon.net, or Paul McKeown at 412-835-6692, mckeownp@comcast.net

### The Montour Railroad Historical Society:

For more information send email to mrhs@montourrr.com.

## Twilight Trail Walk

On Friday, July 25 from 8:30 p.m. to 10:30 p.m., The Friends of the Montour Trail in Peters Township will be hosting a Twilight Trail Walk along Arrowhead Trail. Once again this year, we will have 2 starting locations: My Big Fat Greek Gyro located at 502 Valleybrook Road, and St. Petersburg Center located at 210 Valleybrook Road, McMurray, PA 15317. For a \$7.00 donation, participants can walk along the luminaria-lit trail. Participants will also receive a glow necklace to light their way, and an entry into a raffle for great prizes from local businesses. Participants are encouraged to bring a chair and stay for the refreshments and music. Children under 5 and pets are free. **Registration will be at the event only. \*\*Road Construction Alert\*\* Valleybrook Road is closed at Route 19. Both locations can be accessed from McMurray Road.** All proceeds will benefit maintenance and expansion of the Montour Trail in Peters Township. For additional information check the events section at [www.montourtrail.org](http://www.montourtrail.org), our Facebook page <https://www.facebook.com/mtcpetersfriends>, email [sueheadley@comcast.net](mailto:sueheadley@comcast.net) or call 412-835-3011.

## UPDATE -Mile "0 Trail Head" to Close for Extended Periods.

The Mile "0 Trail Head" will be closed for extended periods in 2014. At mile 0.3, there is a "superfund" cleanup project that as of this writing is to commence on May 25. This is a federally mandated project under the jurisdiction of the Environmental Protection Agency (EPA).

The hazardous material is underground and when the contractor starts digging below the surface, there is a very real possibility of toxic materials being released into the air. PLEASE, PLEASE, PLEASE do heed all of the numerous warning signs when the Mile "0" trailhead and trail in that area are closed.

The project as mentioned is to commence on May 25. There will be some preliminary work and then the trail at mile "0" to "0.5" will be closed for two months from 06/16/14 through 08/15/14. If all goes as planned the trail will be available for use on weekends and holidays starting 08/16/14 and reopened full-time after 10/23/14.

When the project starts, the Mile "0" trail head will be more or less closed from June 16 through October 23, 2014. The contractor will be posting signs on the Route 51 when access to the trailhead at 'Mile 0' is closed and there will also be signs posted on the trail. All other trailheads and trail sections will remain open.

### SPECIAL NOTE : THE TRAIL WILL BE OPENED FOR THE TOUR THE MONTOUR ON SEPTEMBER 20, 2014

Please see the back page for the latest work schedule. The final schedule will be posted on the MTC website.

Thanks for your understanding and cooperation.

## The 14th Annual Burgh's Pizza & Wing Pub 10K / 5K Runs and 2 Mile Fun Walk (from the Burgh's web page)

The 14th Annual Burgh's Pizza & Wing Pub 10K / 5K Runs and 2 Mile Fun Walk for family, friends and fun benefiting the Montour Trail was held on Sunday April 27, 2014 with a beautiful blue sky above and chilly temperatures. There was a combined 949 registered participants, 475 finished the 5K Run and 316 finished the 10K Run. In addition, we had 73 runners complete both the 5K and 10K Runs along with 76 participants in the 2 Mile Fun Walk. Congratulations to Andrew Ogburn, winner of the drawing for the 32" LG LED HDTV donated by Bridgeville Appliance for those participants registering for the event online. Entering this year's event, we have donated \$270,000.00 to the ongoing maintenance and development of the Trail and hope to exceed \$300,000 when all the final numbers are in for this year's event. The success of this event goes to the great group of volunteers from local businesses, Montour Trail Council members, Cecil Township Parks & Recreation, Cecil Police Department, South Bridge EMS, Burgh's team members and especially Race Committee members. In addition to our volunteers, local business partners and customers making monetary donations, special thanks to our Corporate Partners {\$2500 monetary donation}: Wilson-McGinley Distributing / Miller Lite and Cintas - The uniform company for their ongoing support. View official event results at [www.runhigh.com](http://www.runhigh.com). Check our event photos on our facebook page, follow us on Twitter @burghspizzawing or on Instagram @burghspizzawingpub or <http://www.bpwp.net/>. Here are the top finishers courtesy of [www.runhigh.com](http://www.runhigh.com):

PLACE	FINISHER		TIME
<b>5k</b>			
<b>OPEN MEN</b>			
1	Heath Piper	Eighty Four, PA	18:36
2	Mike Romzy	Pittsburgh, PA	18:46
3	Brook Sharpnack	Washington, PA	19:02
<b>Open Women</b>			
1	Kristen Wilson,	Upper St. Clair, PA	21:47
2	Tammy Williams	McMurray, PA	21:51
3	Rachel Powers	Pittsburgh, PA	21:58
<b>10k</b>			
<b>Open Men</b>			
1	Josh Simpson	Morgantown, WV	32:54
2	Adam Schroer	Morgantown, WV	33:10
3	Tim Wu	Pittsburgh, PA	6:31
<b>Open Women</b>			
1	Anna Beck	Washington, PA	37:45
2	Jamie Morgenstern	Pittsburgh, PA	38:29
3	Leigh Ciofani	Bridgeville, PA	40:33



*A Dennis Sims Photo*

## Westland Branch Update by Gil McGurl

On May 12, the Lane Construction company began construction of the remaining section of the Westland branch of the Montour Trail. This section being constructed will extend from Hillmore Lane (lower lefthand corner of photo below left) around the rear of Weavertown Environmental, and then across Route 50 and Southview Road before connecting with the main trail at Gilmore Junction (upper right). Crosswalks will be marked at both road crossings and a Crossalert warning signal will be installed at the crossing of Route 50. While this construction is underway, some problems that have arisen with sections constructed earlier will be corrected. It is likely that the work can be completed within two months after which the Westland branch will be available for riders



For safety reasons, trail users are asked to avoid the Westland Branch until the construction is complete and the trail is officially open. Once the trail is opened, please use caution at road crossings, particularly Route 50 because of the high traffic volume and speed. Also, please respect the property of adjoining landowners. Hillmore Lane is a private road and should not be used to access the trail. There is a trailhead on Hornhead Road in Westland just a short distance from Route 519.

The average gradient between Hillmore Lane and Westland is greater than on most of the Montour Trail at about 2.5%, so riders will get some extra exercise going uphill and some more fun while descending.

## Pedestrian And Bicycle News

by Dino Angelici

The high demand for pedestrian and bicycle friendly roadways, workplaces, and neighborhoods is quite apparent in the Greater Pittsburgh area. The progress in the city of Pittsburgh is well known and the effects are reaching into the suburbs as demand there grows. Pedestrian and Bicycle (Ped/Bike) organizations have begun operating in the South Hills, Millvale, Latrobe, and Cranberry Township. The City of Pittsburgh is working on installation of protected bike lanes to augment its already large network of highly successful bike lanes and shared use roadways.

Ped/Bike committees in several communities have had meetings this month and some have received grant monies to begin projects that have good community support. On a recent "field trip" to Cranberry Township, members of the South Hills group received a briefing from the township's Community Development staff and then a tour of the Graham Park project (see photo). Essentially, what began 20+ years ago as a bedroom community, where residents mainly worked elsewhere and used highways to commute, is being transformed into a community of interconnected neighborhoods within which residents live, work, and relax. Due to demand from township residents, some of the connections between neighborhoods, parks, business areas and workplaces are designed to be ped/bike friendly as well as being accessible via automobile.

Last year, several communities in suburban Pittsburgh participated in a program to obtain bicycle racks for their residents. It was sponsored by the Sustainable Pittsburgh organization and the bike racks were purchased through Bike Pittsburgh. The successful southern and western communities that received the racks and are in varying stages of installation are; Carnegie, Collier Township, Coraopolis, Dormont, Elizabeth Borough, Heidelberg, Homestead, McKees Rocks, Moon Township, Mt. Lebanon, and Scott Township. Bike racks have been few and far between in suburban communities but some new spots where you can find a place to lock your bike are:

- Collier Township – Webb Park (installation soon to be finished) just up the road from the Walkers Mill Trailhead for the Panhandle Trail.
- Coraopolis – Soon to be installed near the McDonalds on 4<sup>th</sup> Street.
- Elizabeth Borough – on S. 2<sup>nd</sup> Avenue, in front of Top O' the Morning Coffee and Doughnut Shop.
- Heidelberg – According to Mayor Kenneth Lasota – First Street, in front of the Volunteer Fire Department; Railroad Street, in front of the Borough Building; Oak Way, behind the community center; Ellsworth Avenue, at the Ellsworth Avenue Borough Park; Third Street, next to the PAT Bus Shelter; Industry Way at the Heidelberg Park.
- Homestead – In two areas of the Waterfront Plaza.
- Mt. Lebanon – on Castle Shannon Boulevard in front of the Luma Restaurant and the brand new Hitchiker Brew Pub.

To paraphrase the ABATE organization, "Pedestrians and Bicyclists are Everywhere" and conditions are becoming more hospitable as we move forward.

## Enter Our Bi-Monthly Photo Contest

Everyone is invited to submit one photo between each newsletter. Content, composition, and artistic expression will be taken into account. Subjects might include, but are not limited to, trail users, flora and fauna, exercise equipment, pets, trail structures and the like. The trail should be included in the shot but is not absolutely necessary. Photos must be taken on the Montour Trail. Photos from other trails will not be considered.

The winner of each bi-monthly contest will receive Montour Trail accoutrements worth thousands of pennies and selected just for them. But of course, what are a few baubles compared to the inestimable feeling of accomplishment you will receive from knowing that your photographic skills have finally received the recognition they deserve? Winners will also have their photo published (with their name) in the Montour Trail Newsletter for all to adore and admire! What could be better than that?

All submissions will be added to the trail's photo album on it's website and will be subject to use by the Montour Trail Council for publicity purposes.

So email your photo to [mtcphotocontest@montourtrail.org](mailto:mtcphotocontest@montourtrail.org). Please include your name and a brief description of where on the trail the picture was taken.

## Bi-monthly Photo Contest Winner!



It took the judges all night to narrow the latest submissions down to 4 and then another afternoon to arrive at a consensus, but in the end, it was Distant Rails taken by Charles May from the bridge over Chartiers Creek outside the Greer Tunnel that won out. As one judge put it, "(though) very traditional, the branch in front on left side layers the photo and adds to the interest, the rawness of time of year is captured, and the flash of rust colored bridge and blue of water is a nice contrast." Congratulations, Charles - your Montour Trail paraphernalia is on its way!

## MONTOUR RAILROAD HISTORY

### Industries along the Montour Railroad - Briggs & Turivas

By Bryan Seip - Montour Railroad Historical Society

One of the interesting industries serviced by the Montour Railroad was Briggs & Turivas. B&T, as it was known, was located along Cliff Mine Road, just off the Parkway West. There are now two office tower buildings located at the site, at Mile 5.2 on the Trail.



*The Briggs & Turivas yard is filled with rail cars and recovered parts in 1948. In the background, construction is taking place on the Parkway West. County of Allegheny photo.*

Briggs & Turivas was a large railroad scrap and servicing company, headquartered in Chicago. They opened their facility along the Montour Railroad in 1928 and operated there for over 50 years.

B&T was a scrap yard and more. They would bring in rail cars to be repaired, rebuilt or scrapped. During the steam era, used locomotives were often bought by B&T. Many of them were written off as scrap by the original owner railroad, but after being rebuilt at B&T, they were then sold and returned to service on another railroad that needed additional motive power. Steam locomotives from area railroads like the Bessemer & Lake Erie and the Pittsburgh & Lake Erie were among those refurbished and resold by B&T.

The B&T yard could be seen from the Parkway West, filled with cars of all types and sizes. It fueled the imagination of many a youngster as they rode by in their family's car. Rail cars and equipment coming in and out of B&T on the Montour Railroad gave a break to the sight of strings of hopper cars passing by on the main line. Almost anything could be seen coming to B&T. There were box cars, tank cars, gondolas, hoppers and flats. Those destined to meet the scrapper's torch, wrecked cars and old cars were cut up and the steel recycled to the steel mills. At times, sparks from the welding torches filled the air and cranes were moving parts, panels and scrap into gondolas, adding to the busy scene in the B&T yard.

Gondolas filled with steel scrap were sent out of the yard, along with rebuilt cars that would then see additional revenue service.

When the Montour Railroad ceased operations in the early 1980's, B&T was left without a way to move their cars. B&T then relocated their operation to Dennison, Ohio, where they took over an old servicing facility from the Pennsylvania Railroad. B&T eventually closed the Ohio location when the PRR Panhandle Division ceased operations in the 1990's.

B&T also purchased some equipment from the Montour Railroad. When Montour operations ceased in the 1980's, B&T purchased the X1 crane from the railroad and sent it to Dennison, where it worked for another 10 years, until a main engine failure ended its useful life. Upon its later donation to the Montour Railroad Historical Society, the X1 was moved back to its home territory, where it is undergoing cosmetic restoration at Trail Mile 30.



*Looking south along Cliff Mine Road in 1947. County of Allegheny photo.*



*This 1956 view shows the yard at B&T. Two office buildings now occupy this site. Fred Bradley photo.*

Briggs & Turivas generated a lot of non-coal traffic on the Montour Railroad, with cars and equipment coming and going in both directions to the interchange points with other railroads. It fueled the interest of rail fans and of modelers alike, as any type of car from any railroad might be seen on the Montour at B&T.

You can contact the Montour Railroad Yahoo group at [http://finance.groups.yahoo.com/group/montour\\_rr/](http://finance.groups.yahoo.com/group/montour_rr/) There are currently 334 members from across the country. You are encouraged to join. There is a wealth of information about the Montour Railroad at this location and you can pose questions of its membership, from whom you are sure to get an answer. There is also much information at <http://www.montourrr.com>

## Welcome New Members

The Montour Trail Council welcomes these new members and thanks them for their support. We would also like to thank all our members who have recently renewed their membership and to remind all that a growing membership is one of the criteria foundations look for when we apply for grants.

### New Members

Bernadette Brenkus

Sharon Chebatoris

Daniel C. Ferguson, Jr.

Mark Place

### Benefactors

Todd Carroll

Charles & Joan Marstiller

Rolf Otterness

Jack Peth

Ronald Piroli

Andrew & Ming Tung

### Leaders

Roger Hindenlang & Susan Uram

## Valley Brook Bridge #2 Update

As predicted (with an 80% probability) in the last Trail Letter, the Valley Brook Bridge #2 project has indeed gone out to bid on April 25, with a bid opening date of May 23. So as you read this, the MTC is likely engaged in contracting with the lowest qualified bidder for the project. The final design and abutment construction should happen this year, with a projected construction completion date of June 30, 2015.

But there is even more good news. The last article on this project indicated that there will be trail closures and trail user detours required for several month periods during this project. That is still true, but a cooperative trail neighbor has enabled that inconvenience to be minimized considerably. The Tom A. Robinson family, owner of the adjacent property immediately west of the project, has graciously agreed to several accommodations during construction that will significantly reduce the level of inconvenience to trail users.

More will be communicated to trail users as the time of construction nears, so suffice it to say that trail detours and trail parking options will be much better thanks to the Robinsons' cooperation. We are grateful to have such considerate trail neighbors, and hope that you will express your thanks to Tom and his family should you see them along the trail.

## I want to help complete the Montour Trail!

### I want to join the Montour Trail Council at this level:

<input type="checkbox"/>	Student/Senior	\$15
<input type="checkbox"/>	Individual	\$25
<input type="checkbox"/>	Family	\$35
<input type="checkbox"/>	Supporting	\$50
<input type="checkbox"/>	Sustaining	\$100
<input type="checkbox"/>	Benefactor	\$250
<input type="checkbox"/>	Leader's Circle	\$500+

Make checks payable to the "Montour Trail Council"

Send me the newsletter by email  mail

Name \_\_\_\_\_

Address \_\_\_\_\_

Phone (Day) \_\_\_\_\_

Phone (Evening) \_\_\_\_\_

Email \_\_\_\_\_

Mail to:  
Montour Trail Council  
Suite #3 2nd Floor  
304 Hickman Street  
Bridgeville, PA 15017

*The Montour Trail Council is a 501(c)(3) non-profit corporation. All donations are tax-deductible. You may also be eligible for matching funds from your employer. A copy of the Montour Trail Council's official registration and financial information may be obtained from the Pennsylvania Department of State by calling (toll-free within Pennsylvania) 800-732-0999. Registration does not imply endorsement.*

Don't Forget

The Montour Trail Council may be designated as your United Way Contributor Choice as option #3308.



**MONTOUR TRAIL COUNCIL**  
 Suite #3 2nd Floor  
 304 Hickman Street  
 Bridgeville, PA 15017

Address Service Requested

NON-PROFIT ORG  
 US POSTAGE  
**PAID**  
 PITTSBURGH, PA  
 PERMIT NO. 2524

**Anticipated Trail Closure Calendar**  
**Breslube-Penn Superfund Site Remedial Construction**

May-14						
Su	Mo	Tu	We	Th	Fr	Sa
				1	2	3
4	5	6	7	8	9	10
11	12	13	14	15	16	17
18	19	20	21	22	23	24
25	26	27	28	29	30	31

Jun-14						
Su	Mo	Tu	We	Th	Fr	Sa
1	2	3	4	5	6	7
8	9	10	11	12	13	14
15	16	17	18	19	20	21
22	23	24	25	26	27	28
29	30					

Jul-14						
Su	Mo	Tu	We	Th	Fr	Sa
		1	2	3	4	5
6	7	8	9	10	11	12
13	14	15	16	17	18	19
20	21	22	23	24	25	26
27	28	29	30	31		

Aug-14						
Su	Mo	Tu	We	Th	Fr	Sa
					1	2
3	4	5	6	7	8	9
10	11	12	13	14	15	16
17	18	19	20	21	22	23
24	25	26	27	28	29	30
31						

Sep-14						
Su	Mo	Tu	We	Th	Fr	Sa
	1	2	3	4	5	6
7	8	9	10	11	12	13
14	15	16	17	18	19	20
21	22	23	24	25	26	27
28	29	30				

Oct-14						
Su	Mo	Tu	We	Th	Fr	Sa
			1	2	3	4
5	6	7	8	9	10	11
12	13	14	15	16	17	18
19	20	21	22	23	24	25
26	27	28	29	30	31	

Anticipated Trail Closure Calendar  
 Breslube-Penn Superfund Site Remedial Construction

Nov-14						
Su	Mo	Tu	We	Th	Fr	Sa
						1
2	3	4	5	6	7	8
9	10	11	12	13	14	15
16	17	18	19	20	21	22
23	24	25	26	27	28	29
30						

**Legend:**

- Trail expected to be open.
- Trail may be closed, depending of work schedule and specific remediation activities being conducted that day.
- Trail expected to be closed due to physical and potential chemical hazards.

**Notes:**

1. The remedial construction schedule is based on information available as of May 14, 2014 and current estimates of the mobilization date and construction task sequencing and durations. This schedule is subject to revision due to in-field project modifications, unforeseen circumstances, weather and ground conditions, and other factors beyond the control of the Breslube-Penn Performing Trust.
2. All trail openings on non-work days shall be made on a case-by-case basis with the approval of EPA.